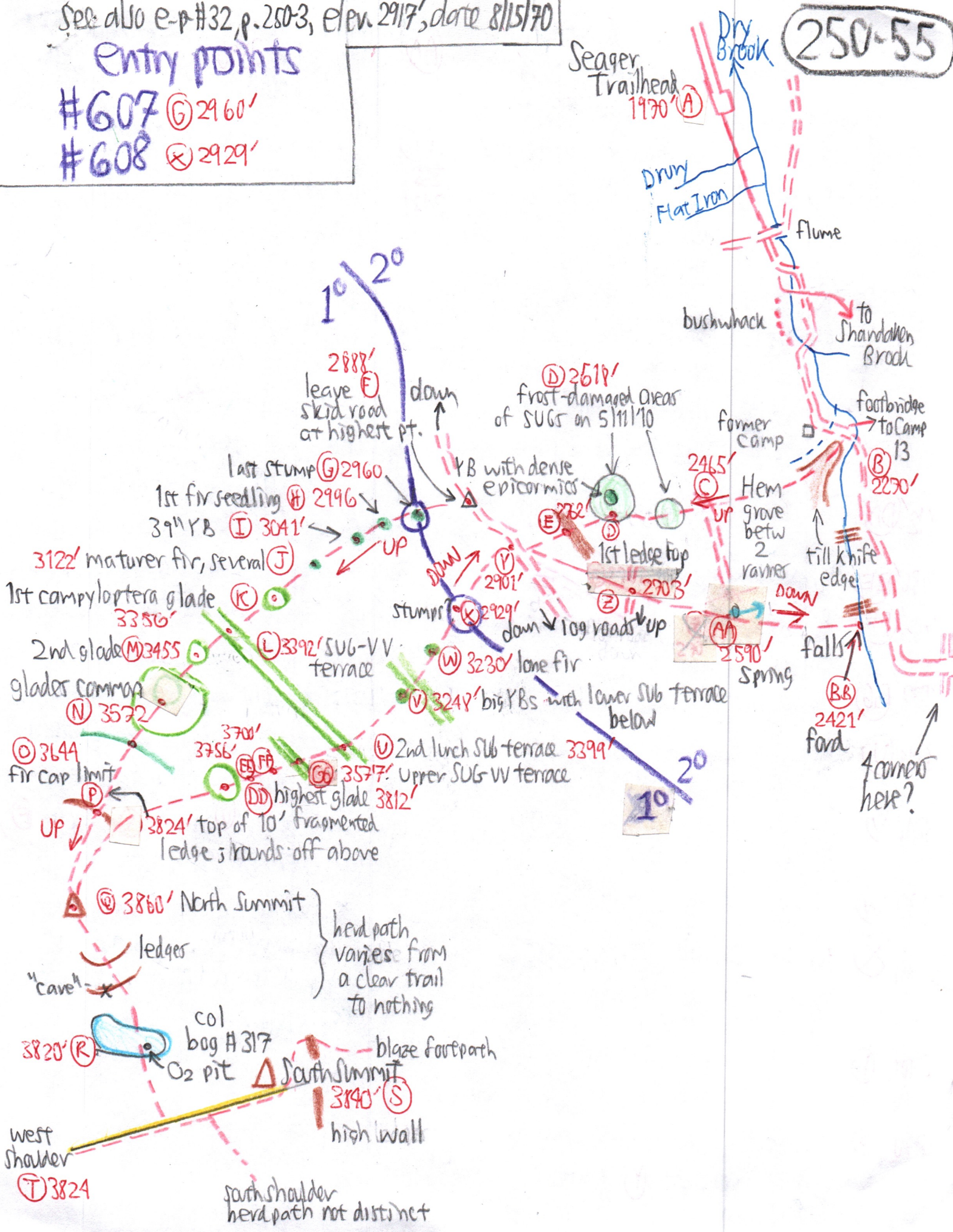


See also e-p #32, p. 250-3, elev. 2917', date 8/15/70

Entry points

- #607 (G) 2960'
- #608 (X) 2929'

250-55



Seager Trailhead 1970 (A)

Dry Brook
Dry Flat Iron

flume

bushwhack

to Shandaken Brook

footbridge to Camp 13

former camp

Hem grove betw 2 ravines

till knife edge

falls

Spring

ford

4 corners here?

2888' leave (E) skid road at highest pt. down

(D) 2519' frost-damaged areas of SUGS on 5/11/70

Last stump (G) 2960

1st fir seedling (H) 2996

39" YB (I) 3041'

3122' mature fir, several (J)

1st campyloptera glade (K) 3356'

2nd glade (M) 3455'

(L) 3392' SUB-VV terrace

glades common (N) 3572'

(O) 3644' fir cap limit

3700' 3756'

(U) 2nd lunch SUB terrace 3399'

(G) 3577' upper SUG-VV terrace

(DD) highest glade 3812'

UP 3824' top of 10' fragmented ledge; rounds off above

(A) 3860' North Summit

ledges

"cave"

head path varies from a clear trail to nothing

3820' (R) col bag # 317

O₂ pit North Summit 3840' (S)

high wall

west shoulder (T) 3824

south shoulder head path not distinct

On Shoulder of S Summit,
only moderately steep, similar to NE
Shoulder, with a rapid transition to
RM-YB-BC-B within 30 or 40 ft.
of the summit

DESCENT: As with the ascent, but 180°
Eagle Mtn. is straight ahead when
it was visible. Also col to Big
Indian Mtn. with NDome?? over
the col. Maybe "Fox Hollow Mtn."

- 3812' (DD) Fir about 50% dom, equal with
hardwoods
- 3756' (EE) Highest beech
- 3700' (FF) Few fir left. B-YB dominant with
canyon glades
- 3577' (GG) SUB-VV terrace
- 3399' (U) Rest stop in hardwoods on
SUB terrace 72° F
- 3247' (V) Big YBs, a few SUB, but B dom.
A 3rd terrace below
- 3230' (W) A lone 6" fir. SM
- 2929' (X) Ost. possible stumps just
above & reenter 2°.
SUBs frusted.
- 2901' (Y) 1st NEM on descent, then more &
up to 35" just below road.
- 2703' (Z) lower log road climbs UP to
south while upper (Y) climbed DOWN
to south.

(AA) Spring with 2590 **250-56**
SUBs frusted

(BB) Dry Brook Valley floor quite
narrow here & even narrower at
falls below. Ford not difficult
in low water.

General obs on fir summit

There is nil evidence of severe
blowdown followed by thickets as
there is on Slide & Schekelmoose.

A high ledge is not required
to maintain a fir dominance above
it. * Most of Double Top's shoulders
are ^{only} mod-slope with low 10 ft.
ledges, yet fir drop out rapidly
with a descent of only ± 50 ft; below
this is a mixed fir-hardwood
belt until about 3644 to 3700 ft (FF)
below which fir are rare.

* Not on Balsam Lake or Eagle
or Balsam Mtns. Sounds like
N hdwd competition rather than
topography.